

# RHT SS Manifold

Submittal Information



Radiant Heat Technologies

## Project Information

Job Name:

Location:

Engineer:

Contractor:

Manufacturer's Representative:

Part No. Ordered:

Date Submitted:

Submitted By:

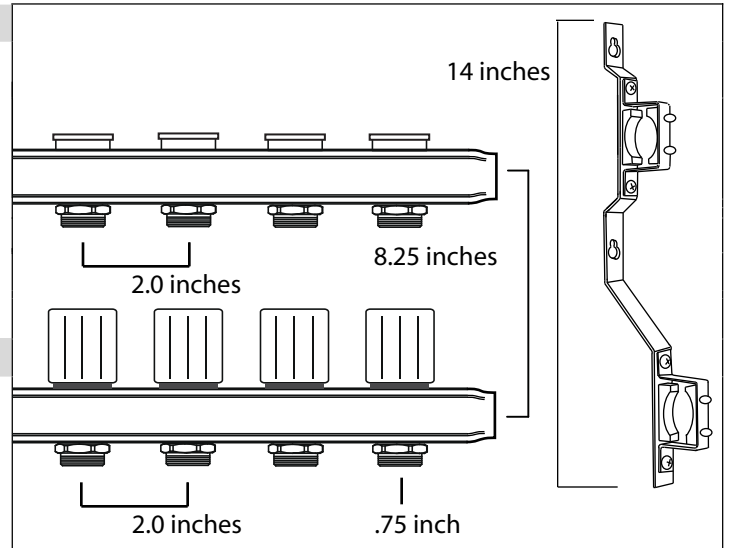
Approved By:

## Technical Data

1"(ID) Stainless Steel Extrusion  
Ball Valve Isolators on Supply and Return  
Temp Gauge on Supply and Return  
Valve Control on Supply  
Air Eliminator and Boiler Drain on Supply and Return  
Valve Control w/Optional 24V Actuator on Return  
Brackets Included

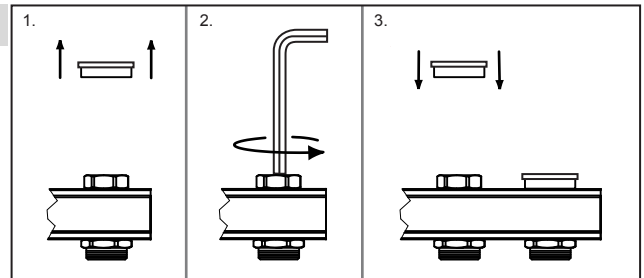
## Product Information and Application Use

The RHT SS manifold is available from two to eight circuits for the intended use in low-pressure non-potable hydronic heating systems. The return side of the manifold will accommodate optional 24v zone valve actuators for greater zoning flexibility. Staggered mounting brackets allow for a clean install and zero strain on PEX tubing.



## Supply Side Valve Adjustment

1. Remove the cap.
2. Using an allen key, turn the valve counterclockwise to open.
3. After the desired flow is set, replace the cap to secure.



## Return Side Valve Adjustment

4. Turn valve counterclockwise to open.
5. Turn valve clockwise to close.
6. Remove valve cap by turning base counterclockwise, this allows the installation of the optional RHT thermostatic actuator.

